

## Video Tracking System



**Video Tracking System**

**Video Tracking System** ..... **2**

TMX-0404SDI2      4x4 High Definition Digital Video Tracking Matrix Switcher (SD/HD/3G, supports HCS-9316CK(/20), with remote control)..... **2**

TMX-0808SDI2      8x8 High Definition Digital Video Tracking Matrix Switcher (SD/HD/3G, supports HCS-9316CK(/20), with remote control)..... **3**

HCS-9316HDN      HD Videoconference Camera (with remote control, black)..... **5**

HCS-9316UHD      4K Ultra HD Videoconference Camera (4K 60P high quality output, with remote control, black)..... **7**

HCS-9316UHD/N      4K Ultra HD Videoconference Camera (4K 60P high quality output, supports NDI network transmission, with remote control, black)..... **9**

HCS-3316HDN\_G      HD Videoconference Camera (with remote control, gray)..... **11**

HCS-9316CK      Camera Control Keypad (3" screen, supports PoE, adapter is included, black)..... **12**

HCS-9316CK/20      Camera Control Keypad (3" screen, HDMI output, supports PoE, adapter is included, black)..... **13**

HCS-3316ZJ      Tripod (for HCS-3316HDB and HCS-3316HDN camera)..... **14**

HCS-4215/50      Video Control Software Module (used with HCS-4100/50 series)..... **15**

HCS-8215      Video Control Software Module (used with HCS-8300 series)..... **15**

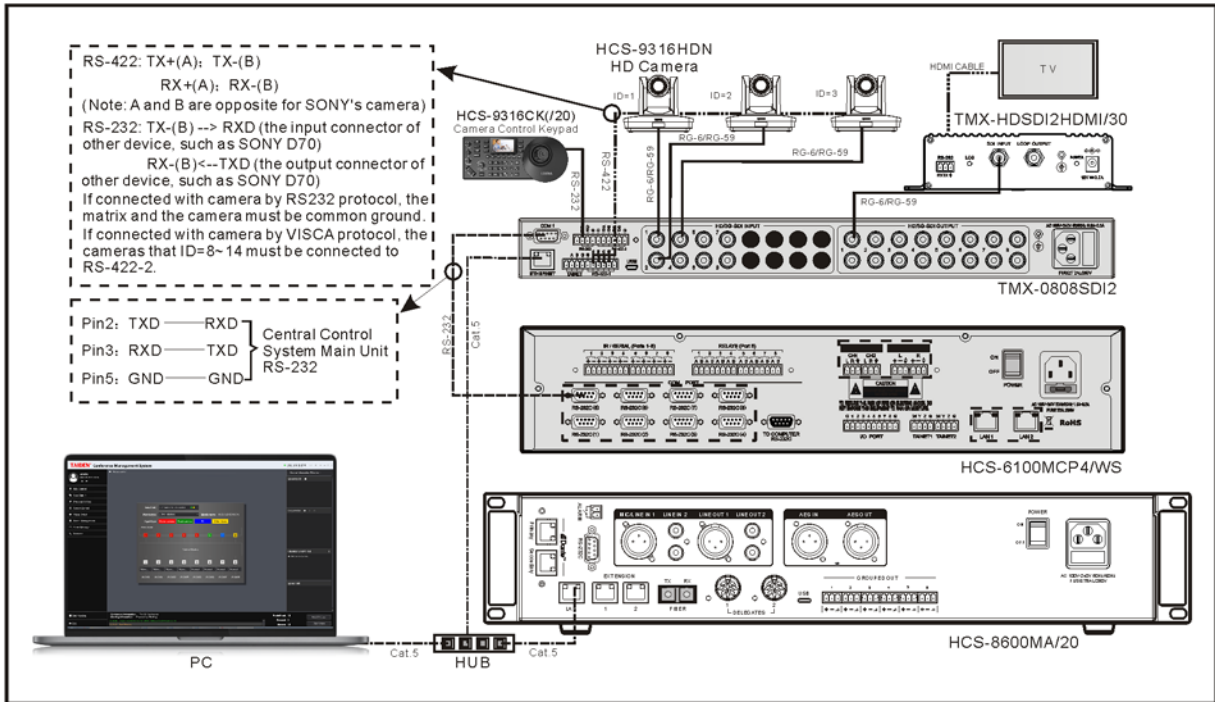
HCS-4515      Video Control Software Module (used with HCS-4800 series)..... **16**

HCS-8515      Video Control Software Module (used with HCS-8600 series)..... **16**





**System Connection**



## HCS-9316HDN HD Videoconference Camera



### Features

- **Quiet PTZ:** By adopting high accuracy Algorithm for PTZ Control, Precise location( $\pm 0.1^\circ$ ), it works extremely quiet and moves smoothly and very quickly to designated position.
- **Superb high-definition image:** It employs high quality CMOS sensor. Resolution is up to 1920x1080 with frame rate up to 60 fps.
- **Low noise and High SNR:** Low Noise CMOS effectively ensure high SNR of camera video.
- **Advanced 2D/3D noise reduction technology** is also used to further reduce the noise, while ensuring image sharpness.
- **20X optical zoom lens and 12x zoom lens:** fast, accurate and stable auto-focus lens with up to 20x optical zoom.
- **Full HD multi-format video output:** It provides HDMI signal output, HD-SDI signal output and IP signal output
- **RS-232C/RS485 (optional) remote control (VISCA protocol/Pelco-D/ Pelco-P):** remote high-speed communication control of all camera settings and pan/tilt/zoom operations using the RS-232C/RS485 (optional) interface. Multiple cameras can be connected via RS-232 cascade interface (VISCA protocol)
- **Multiple address settings:** set the local address via the Menu/VISCA serial command
- **255 presets positions:** the 255 positions can be pre-set through the serial port, including level, tilt and zoom for presetting, and the preset data can be saved even when the camera is powered down and turned off.
- **Multi-functional remote control:** equipped with an easy-to-use remote control, in addition to the basic settings, as well as the level, tilt, zoom, etc. to control, but also through the remote control to call out the menu to set the relevant parameters of the camera.
- **Optional camera reversal function:** support the camera backwards, and can be installed through the OSD menu or send a serial command to change the way.
- **OSD menu function:** rich OSD menu, you can control the Chinese and English OSD menu by remote control

HCS-9316HDN camera for enterprise, education and telemedicine applications with 20x optical zoom and a high frame rate of 60FPS. Users get HD video by connecting to HDMI cables and coaxial video cables. The advanced servo control algorithm enables accurate positioning, smooth and quiet PTZ control. The wide angle lens of the camera can easily cover everyone in the room during video conferencing. It supports 255 preset positions.

SONY's sensitive EXMOR CMOS image sensor ensures exquisite full HD images and high horizontal resolution. High frame rate operation of up to 60FPS ensures natural and clear picture quality, even for the moving object.

It also provides HD-SDI and HDMI interfaces that can output 60FPS frame rate, and can automatically receive VISCA commands and PELCO-P/D protocol commands. You can choose to use RS232 or RS485 interface for connection.

### Technical Specifications

#### Electrical

Image sensor	1/2.8-type HD CMOS sensor
Effective pixels	Five mega pixels, 16:9
Video format	1080P60/50/30/25/59, 1080i/60/50/59, 720P60/50/59
Zoom magnification	20x Optical + 12x digital
Lens zoom	20x optical zoom lens, f=4.7-94 mm
Viewing angle	2.9° (narrow angle) - 62° (wide angle)
Minimum illumination	0.1Lux
White balance	Auto/Indoor/Outdoor/ATW/Manual/Custom
Focus	Auto/Manual
Aperture	F1.6-F9.6
Shutter	1/1-1/100000
SNR	> 52 dB
HD video interface	HDMI, HD-SDI (3G), IP
Control signal interface	8 core mini DIN
Control signal format	Start bit: 1 bit, data bit: 8 bits, stop bit: 1 bit Baud rate: 115200/9600/4800/2400bps
Encoding format	H.264Baseline, Main Profile, High profile H.265 Mainfile MJPEG
Image resolution	Master stream: 1920*1080@30fps, 1280*720@30fps Secondary stream: 720*576@30fps, 640*480@30fps
Video compression bitrate	32kbps-16Mbps continuously adjustable, support CBR/VBR
Subtitle Overlay	Support channel name, date and time, stream information superimposed, superimposed position adjustable
Data Storage	Video, picture files
Storage mode	Manual, automatic
Protocol	TCP/IP, UDP, RTP, RTSP, RTCP, HTTP, DNS, DDNS, DHCP, FTP, NTP, PPPOE, SMTP, UPNP
ONVIF protocol	Standard ONVIF protocol
Client view	Support IE6.0 and above browsers

Power adapter.....AC100V-AC240V to DC12V/1.5A  
 Input voltage.....DC12V(DC11.5-DC12.5V)  
 Power consumption.....15W (max)  
 Mechanical properties.....Pan: ±170°; Tilt: -30° to~90°  
     Pan speed: 1-100°/sec; Tilt speed: 1-60°/sec  
     Preset speed: Pan:100°/sec, Tilt: 60°/sec  
     Preset position accuracy: 0.1°  
 Preset position.....255 (TAIDEN conference management software  
     can preset, clear and recall 64 preset positions)  
 Pan/Tilt control mode.....Servo motor control  
 Use environment.....Indoor  
 Storage temperature.....-10℃ to +60℃  
 Operating temperature.....0℃ to +45℃

**Mechanical**

Dimension (W X H X D)..... 155 mm X 186 mm X 172 mm  
 Color.....Black  
 Weight.....1.3 kg

**Ordering Information**

HCS-9316HDN.....HD Videoconference Camera  
     (with remote control, black)

# HCS-9316UHD 4K Ultra HD Videoconference Camera



## Features

- **4K Ultra HD Output:**  
Using a new generation of SONY 1/1.8-inch high-quality CMOS, it can achieve maximum 4K60 ultra-high-definition resolution broadcast and image output, and record larger scenes.
- **25X Optical Zoom Lens:**  
Equipped with a 25x ultra-high-definition optical lens and supporting the mainstream horizontal viewing angle of 59.2°, it can meet the needs of more scenes such as video conferencing in large auditoriums and blackboard writing in lecture theaters to restore true details.
- **USB3.0+HDMI+IP+SDI Full interfaces, Rich Application Scenarios:**  
Compatible with all current mainstream video output interfaces, HDMI+USB3.0+IP can output 4K60 resolution at the same time.
- **Low Light:**  
The new ultra-high signal-to-noise ratio CMOS image sensor can effectively reduce image noise under low-light conditions. At the same time, 2D & 3D digital noise reduction is applied to significantly reduce image noise. Even under ultra-low light conditions, the image can still be kept clean and clear, and the image signal-to-noise ratio is higher than 50dB.
- **Infrared Remote Control Signal Transparent Transmission Function:**  
In addition to receiving its own infrared remote control signals, it can also receive signals from user's infrared remote control and send them to the video conferencing terminal through the VISCA port.
- **Multiple Video Compression Standards:**  
Different interfaces support multiple video compression formats such as YUY2, H.265, MJPG, and H.264.
- **Multiple Network Protocols**  
Supports ONVIF, SRT, RTSP, RTMP, NDI@|HX and other network protocols.
- **Multiple Control Protocols**  
Supports VISCA (including VISCA Over IP), PELCO P/D protocols, and automatically identifies protocols.

HCS-9316UHD camera for enterprise, education and conferencing applications with 25x optical zoom and a high frame rate of 60FPS. Users get 4K Ultra HD video by connecting to HDMI cables and coaxial video cables. The advanced servo control algorithm enables accurate positioning, smooth and quiet PTZ control. The wide angle lens of the camera can easily cover everyone in the room during video conferencing. It supports 255 preset positions. SONY's new generation sensitive CMOS image sensor ensures exquisite 4K Ultra HD images and high horizontal resolution. High frame rate operation of up to 60FPS ensures natural and clear picture quality, even for the moving object. It also provides HD-SDI and HDMI interfaces that can output 60FPS frame rate, and can automatically receive VISCA commands and PELCO-P/D protocol commands. You can choose to use RS232 or RS485 interface for connection.

## Technical Specifications

### Image Parameters

Image Sensor	SONY 1/1.8" CMOS
Pixels	8.50 Megapixels, 8.29 Effective Megapixels
Resolution	HDMI: 4K60/59.94/50/30/29.97/25, 1080p60/59.94/50/30/29.97/25, 720p60/50 3G-SDI: 1080p60/59.94/50/30/29.97/25, 1080i60/59.94/50, 720p60/50
Scan Mode	Line by line
Lens	25X Optical Zoom, f=7.1(W)~171.95mm(T)
Horizontal View Angle	59.2°(W)~2.5°(T)
Vertical View Angle	34.6(W)~1.4(T)
Iris	F1.61~F5.19
Focus System	Auto, Manual
Shutter Speed	1/50s ~ 1/10000s
Minimum Illumination	0.1Lux
Exposure	Auto, Manual, Iris Priority, Shutter Priority, Brightness priority
White Balance	Auto, Indoor, Outdoor, Keying, Auto Tracking
Backlight Compensation	Support
Digital Noise Reduction	2D&3D Digital noise reduction
S/N Ratio	≥50dB

### Pan/Tilt

Pan Angle	-171°~+171°
Tilt Angle	-30°~+90°
Pan Speed	0.1°/S~120°/S
Tilt Speed	0.1°/S~120°/S
Preset Positions	9 preset positions by IR remote controller, 200 preset positions by joystick controller or PC
Preset Accuracy	0.1°±10%
Flip	Support
Image Freeze	Support
POE+	Support, 802.3at

### USB

Protocol	UVC 1.1, UAC1.0
Operating System	Window7 and above, MacOS, Linux, Android
Video Compression	YUY2, MJPEG

Resolution.....  
 MJPEG: 3840\*2160, 2560\*1440, 1920\*1080,1280\*720,  
 960\*540, 800\*600, 720\*576, 720\*480,  
 640\*480, 640\*360, 352\*288, 320\*240  
 YUY2: 1920\*1080, 1280\*720, 960\*540, 800\*600, 720\*576,  
 720\*480, 640\*480, 640\*360, 352\*288, 320\*240  
 Frame Rate.....Max.60  
 UVC Control.....Support

**LAN**

Protocol.....TCP/IP, HTTP, RTSP, RTMP, RTMPS, SRT,  
 Onvif, DHCP, VISCA Over IP, NDI@HX2 (Optional)  
 Video Compression.....H.264, H.265  
 Code Stream.....Main code stream\*1, Sub code stream\*1  
 Main Stream Resolution.....3840\*2160, 1920\*1080, 1280\*720  
 Sub Stream Resolution.....640\*480, 640\*360, 352\*288,  
 320\*240, 176\*144  
 Bitrate Control.....VBR, CBR

**Audio**

Audio Compression.....AAC  
 Sampling Rate.....48K, 44.1K

**Interface**

HDMI Interface.....HDMI: Version 2.0  
 SDI Interface.....3G-SDI  
 USB Interface.....USB3.0, Type-B Socket  
 Network Interface.....RJ45: 1000M adaptive Ethernet port  
 Audio Interface.....Line In, 3.5mm  
 Serial Interface.....  
 RS232 IN/Out: 8-Pin Mini Din, up to 30 meters,  
 VISCA/Pelco-D/Pelco-P Protocol.  
 RS422/485: 9-Core Phoenix Interface, up to 1200 meters,  
 VISCA/Pelco-D/Pelco-P Protocol.  
 Power Interface.....IEC 60130-10 Type A

**General Specifications**

Tally Light.....Support  
 Input Voltage.....DC 12V  
 Input Current.....Max.1.3A  
 Power Consumption.....Max.9.5W  
 Operating Temperature.....0~40℃  
 Storage Temperature.....-10~60℃  
 Color.....Black, White (Optional)  
 Dimension (h x w x d).....208 x 158 x 193mm  
 Weight.....2.0kg

---

**Ordering Information**

HCS-9316UHD.....4K Ultra HD Videoconference Camera  
 (4K 60P high quality output, with remote control, black)

## HCS-9316UHD/N 4K Ultra HD Videoconference Camera



### Features

- **4K Ultra HD Output:**  
Using a new generation of SONY 1/1.8-inch high-quality CMOS, it can achieve maximum 4K60 ultra-high-definition resolution broadcast and image output, and record larger scenes.
- **25X Optical Zoom Lens:**  
Equipped with a 25x ultra-high-definition optical lens and supporting the mainstream horizontal viewing angle of 59.2°, it can meet the needs of more scenes such as video conferencing in large auditoriums and blackboard writing in lecture theaters to restore true details.
- **USB3.0+HDMI+IP+SDI Full interfaces, Rich Application Scenarios:**  
Compatible with all current mainstream video output interfaces, HDMI+USB3.0+IP can output 4K60 resolution at the same time.
- **Low Light:**  
The new ultra-high signal-to-noise ratio CMOS image sensor can effectively reduce image noise under low-light conditions. At the same time, 2D & 3D digital noise reduction is applied to significantly reduce image noise. Even under ultra-low light conditions, the image can still be kept clean and clear, and the image signal-to-noise ratio is higher than 50dB.
- **Infrared Remote Control Signal Transparent Transmission Function:**  
In addition to receiving its own infrared remote control signals, it can also receive signals from user's infrared remote control and send them to the video conferencing terminal through the VISCA port.
- **Multiple Video Compression Standards:**  
Different interfaces support multiple video compression formats such as YUY2, H.265, MJPG, and H.264.
- **Multiple Network Protocols**  
Supports ONVIF, SRT, RTSP, RTMP, NDI@|HX and other network protocols.
- **Multiple Control Protocols**  
Supports VISCA (including VISCA Over IP), PELCO P/D protocols, and automatically identifies protocols.
- **supports NDI network transmission**

HCS-9316UHD/N camera for enterprise, education and conferencing applications with 25x optical zoom and a high frame rate of 60FPS. Users get 4K Ultra HD video by connecting to HDMI cables and coaxial video cables. The advanced servo control algorithm enables accurate positioning, smooth and quiet PTZ control. The wide angle lens of the camera can easily cover everyone in the room during video conferencing. It supports 255 preset positions.

SONY's new generation sensitive CMOS image sensor ensures exquisite 4K Ultra HD images and high horizontal resolution. High frame rate operation of up to 60FPS ensures natural and clear picture quality, even for the moving object.

It also provides HD-SDI and HDMI interfaces that can output 60FPS frame rate, and can automatically receive VISCA commands and PELCO-P/D protocol commands. You can choose to use RS232 or RS485 interface for connection.

### Technical Specifications

#### Image Parameters

Image Sensor	SONY 1/1.8" CMOS
Pixels	8.50 Megapixels, 8.29 Effective Megapixels
Resolution	HDMI: 4K60/59.94/50/30/29.97/25, 1080p60/59.94/50/30/29.97/25, 720p60/50
	3G-SDI: 1080p60/59.94/50/30/29.97/25, 1080i60/59.94/50, 720p60/50
Scan Mode	Line by line
Lens	25X Optical Zoom, f=7.1(W)~171.95mm(T)
Horizontal View Angle	59.2°(W)~2.5°(T)
Vertical View Angle	34.6(W)~1.4(T)
Iris	F1.61~F5.19
Focus System	Auto, Manual
Shutter Speed	1/50s ~ 1/10000s
Minimum Illumination	0.1Lux
Exposure	Auto, Manual, Iris Priority, Shutter Priority, Brightness priority
White Balance	Auto, Indoor, Outdoor, Keying, Auto Tracking
Backlight Compensation	Support
Digital Noise Reduction	2D&3D Digital noise reduction
S/N Ratio	≥50dB

#### Pan/Tilt

Pan Angle	-171°~+171°
Tilt Angle	-30°~+90°
Pan Speed	0.1°/S~120°/S
Tilt Speed	0.1°/S~120°/S
Preset Positions	9 preset positions by IR remote controller, 200 preset positions by joystick controller or PC
Preset Accuracy	0.1°±10%
Flip	Support
Image Freeze	Support
POE+	Support, 802.3at

#### USB

Protocol	UVC 1.1, UAC1.0
Operating System	Window7 and above, MacOS, Linux, Android
Video Compression	YUY2, MJPEG

Resolution.....  
 MJPEG: 3840\*2160, 2560\*1440, 1920\*1080,1280\*720,  
 960\*540, 800\*600, 720\*576, 720\*480,  
 640\*480, 640\*360, 352\*288, 320\*240  
 YUY2: 1920\*1080, 1280\*720, 960\*540, 800\*600, 720\*576,  
 720\*480, 640\*480, 640\*360, 352\*288, 320\*240  
 Frame Rate.....Max.60  
 UVC Control.....Support

**LAN**

Protocol.....TCP/IP, HTTP, RTSP, RTMP, RTMPS, SRT,  
 Onvif, DHCP, VISCA Over IP, NDI@HX2 (Optional)  
 Video Compression.....H.264, H.265  
 Code Stream.....Main code stream\*1, Sub code stream\*1  
 Main Stream Resolution.....3840\*2160, 1920\*1080, 1280\*720  
 Sub Stream Resolution.....640\*480, 640\*360, 352\*288,  
 320\*240, 176\*144  
 Bitrate Control.....VBR, CBR

**Audio**

Audio Compression.....AAC  
 Sampling Rate.....48K, 44.1K

**Interface**

HDMI Interface.....HDMI: Version 2.0  
 SDI Interface.....3G-SDI  
 USB Interface.....USB3.0, Type-B Socket  
 Network Interface.....RJ45: 1000M adaptive Ethernet port  
 Audio Interface.....Line In, 3.5mm  
 Serial Interface.....  
 RS232 IN/Out: 8-Pin Mini Din, up to 30 meters,  
 VISCA/Pelco-D/Pelco-P Protocol.  
 RS422/485: 9-Core Phoenix Interface, up to 1200 meters,  
 VISCA/Pelco-D/Pelco-P Protocol.  
 Power Interface.....IEC 60130-10 Type A

**General Specifications**

Tally Light.....Support  
 Input Voltage.....DC 12V  
 Input Current.....Max.1.3A  
 Power Consumption.....Max.9.5W  
 Operating Temperature.....0~40℃  
 Storage Temperature.....-10~60℃  
 Color.....Black, White (Optional)  
 Dimension (h x w x d).....208 x 158 x 193mm  
 Weight.....2.0kg

---

**Ordering Information**

HCS-9316UHD/N.....4K Ultra HD Videoconference Camera  
 (4K 60P high quality output, supports NDI  
 network transmission, with remote control, black)

## HCS-3316HDN HD Videoconference Camera



### Features

- Dedicated HD videoconference camera
- Built-in 1/2.8-type HD CMOS image sensor with 5M pixels, 20x zoom lens, providing 240x zoom ratio (20x optical plus 12x digital)
- Broadcast quality full HD image up to 1080p60
- Wide dynamic range, high S/N ratio and 2D/3D noise reduction algorithm reproducing clear images in poorly-illuminated environment
- H.265/H.264 video coding and G7.11/G7.26 audio coding for 1080p baseband streaming
- Reliable, fast and quiet PTZ operation
- Simultaneous transmission of 3G-SDI, HDMI and IP full HD video
- Versatile connectivity supports for VISCA or PELCO-D protocols via RS-485/RS-232, which allows for efficient remote camera control
- 10M/100M adaptive Ethernet port, for video and audio stream output and control data interaction
- Fast and stable 240x zoom (20x optical 12x digital) auto-focus lens
- Built-in conversion lens for wide viewing angle (61°)
- Support up to 64 presets, pan, tilt and zoom values can be saved even after reboot

HCS-3316HDN can deliver high quality video signals simultaneously through two HD video outputs. It also boasts of rapid, smooth and silent PTZ operation thanks to its direct drive motor. The camera covers a wide shooting range, with a wide pan range of 300° ( $\pm 150^\circ$ ) and a tilt range of 120° (-30° to +90°). Both pan and tilt speeds are variable within the range of 0.1° to 200° and 0.1° to 150° respectively. Conference rooms everywhere are making the transition to HD and it makes this change effortless.

This unique camera employs a 1/2.8-type HD CMOS image sensor with five mega effective pixels and can be used in combination with any number of codecs and other systems to produce high-quality, high-resolution images. With its wide field of view, built-in 20x optical zoom lens, 16:9 aspect ratio video and high-speed, quiet pan/tilt operation, the camera can cover subjects across wide space with minimal disturbance. Combining convenient features such as auto focus/ auto exposure, 64-position presets, auto cruise, configurable scan mode, remote control, and external control via standard RS-485/232 interface, it is ideal for application

including videoconferencing, distance learning, corporate training, etc.

### Technical Specifications

#### Electrical

Image sensor	1/2.8-type HD CMOS sensor
Effective pixels	Five mega pixels
Signal system	HD: 1080p60, 1080p50, 1080p30, 1080p25, 1080i60, 1080i50, 720p60, 720p50, 720p30, 720p25
Shutter speed	1/60 s - 1/10000 s (60Hz), 1/50 s - 1/10000 s (50Hz)
Minimum illumination	0.5 lux (50IRE, F1.6)
Horizontal viewing angle	61° (wide)
Lens	20x Optical + 12x digital
Noise reduction	2D/3D noise reduction algorithm
SNR	$\geq 55$ dB
Synchronous mode	Inter-sync
Back light	On/Off/Auto
Pan speed	0.1°/s - 200°/s
Tilt speed	0.1°/s - 150°/s
Pan angle	-170° to +170°
Tilt angle	-30° to +90°
Preset position	255 (TAIDEN conference management software can preset, clear and recall 64 preset positions)
Preset precision	0.1°
Video output	HD-SDI, HDMI
Multiple video outputs	Simultaneous output of 2 HD video and 1 IP video
Ethernet interface	10M/100M adaptive Ethernet port
Control protocol	PELCO-D, VISCA
Control interface	RS-485, RS-232
Baud rate	2400/4800/9600/19200/38400 bps
Video coding standard	H.265, H.264
Main stream resolution	1920x1080, 1280x720
Sub stream resolution	720x576, 720x480, 960x540
Bitrate	variable (128k-8192kpbs)/fixed
Frame rate	50Hz: 1-50fps, 60Hz: 1-60fps
Address range	0 ~ 255
Operating temperature	0°C ~ +50°C
Storage temperature	-20°C ~ +70°C
RH operating range	0 - 95% relative humidity (non-condensing environment)
Power supply	DC 12 V
Power consumption	<10 W

#### Mechanical

Installation	Tabletop or ceiling-mounting
Dimensions (h x w x d)	170 x 260 x 163 mm
Color	Gray (PANTONE Cool Gray 11C)

### Ordering Information

HCS-3316HDN_G	HD Videoconference Camera (with remote control, gray)
---------------	--

# HCS-9316CK Camera Control Keypad



HCS-9316CK is a multifunctional PTZ camera control keypad, equipped with a 3-inch display and a four-dimensional joystick, supporting camera PTZ control, white balance control, exposure control, focus control and other operations. It is suitable for meetings, teaching, events and other places with camera control needs.

## Features

- **4D precise Joystick + 3D knobs + ergonomic zoom button:**  
Camera parameters control such as camera white balance, exposure, focus and zoom.
- **Built-in 3-inch LCD screen:**  
Support real-time PVW of current camera viewing through up streaming (RTSP only).
- **Supports 7 camera selection shortcuts:**  
7 camera shortcuts can be set quickly according to requirements, up to 1000 camera information can be saved.
- **Newly upgraded UI operation interface:**  
Display main parameters of camera directly, personalize stylish interface casually.
- **PTZ camera menu remote operation:**  
Open camera's menu quickly and combine PVW screen or image screen to control.
- **White and red backlight silicone buttons:**  
High-quality silicone, excellent touch, support white and red backlight, smooth operation in low-light environments, support letters and common characters input and other operations such as editing camera's name and address.
- **Supports buttons lock via one click:**  
Lock buttons via one click to avoid misoperation.
- **Multiple control protocols, applicable to most venues:**  
Support VISCA, VISCA Over IP, VISCA TCP, PELCO P/D and Onvif control protocols, support automatic protocol recognition.
- **Abundant interfaces, multiple connection methods:**  
External RS-232, RS422/485 serial port and RJ45 network interface, the network interface supports POE function, thereby reducing wiring trouble.
- **External Tally interface:**  
Support up to 8 tally channels.
- **Support customizable buttons:**  
Support F1, F2, PVW custom buttons, can set the best operating functions according to requirement.
- **Newly upgraded, support WEB backstage management:**  
Access Web backstage through PC internet to set up main functions.

## Technical Specifications

### Control Keypad Parameters:

Joystick.....	4D precision Joystick
Knobs.....	3D knob, support scale rotation to adjust parameters, support button function selection mode
Buttons.....	High-quality silicone buttons, support white and red two-color backlight
Screen.....	3-inch LCD color display
Shortcut Button.....	Support 7 camera shortcut buttons setting
Beep Prompt Tone.....	Button sound prompts on/off
Lock Button.....	Support one-key lock function
Max. saved cameras Quantity.....	1000
Max. Preset Position.....	255
Customizable Buttons.....	Support three buttons to customize

### Control:

Control Interface.....	RJ45 (supports POE), RS-232, RS-422/485
IP Control Protocol.....	Onvif, VISCA Over IP, VISCA TCP
Serial Control Protocol.....	VISCA, Pelco-D, Pelco-P

### Power:

Input Voltage.....	12V
Input Current.....	0.25A
PoE.....	802.3af
Rated Power.....	3W

### Others:

Tally.....	Support up to 8 channels
Operating environment.....	Indoor
Operating Temperature.....	-10°C ~ -40°C
Storage temperature.....	-20°C ~ -60°C
Dimensions (WxDxH).....	332x136x58mm (Joystick is not included) 332x136x116mm (Joystick is included)
Weight.....	0.8kg

## Ordering Information

HCS-9316CK.....	Camera Control Keypad (3" screen, supports PoE, adapter is included, black)
-----------------	---

## HCS-9316CK/20 Camera Control Keypad



HCS-9316CK/20 is a multifunctional PTZ camera control keypad, equipped with a 3-inch display and a four-dimensional joystick, supporting camera PTZ control, white balance control, exposure control, focus control and other operations. It is suitable for meetings, teaching, events and other places with camera control needs.

### Features

- **4D precise Joystick + 3D knobs + ergonomic zoom button:**  
Camera parameters control such as camera white balance, exposure, focus and zoom.
- **Built-in 3-inch LCD screen:**  
Support real-time PVW of current camera viewing through up streaming (RTSP only).
- **Supports 7 camera selection shortcuts:**  
7 camera shortcuts can be set quickly according to requirements, up to 1000 camera information can be saved.
- **Newly upgraded UI operation interface:**  
Display main parameters of camera directly, personalize stylish interface casually.
- **PTZ camera menu remote operation:**  
Open camera's menu quickly and combine PVW screen or image screen to control.
- **White and red backlight silicone buttons:**  
High-quality silicone, excellent touch, support white and red backlight, smooth operation in low-light environments, support letters and common characters input and other operations such as editing camera's name and address.
- **Supports buttons lock via one click:**  
Lock buttons via one click to avoid misoperation.
- **Multiple control protocols, applicable to most venues:**  
Support VISCA, VISCA Over IP, VISCA TCP, PELCO P/D and Onvif control protocols, support automatic protocol recognition.
- **Abundant interfaces, multiple connection methods:**  
External RS-232, RS422/485 serial port and RJ45 network interface, the network interface supports POE function, thereby reducing wiring trouble.
- **External Tally interface:**  
Support up to 8 tally channels.
- **Support customizable buttons:**  
Support F1, F2, PVW custom buttons, can set the best operating functions according to requirement.
- **Newly upgraded, support WEB backstage management:**  
Access Web backstage through PC internet to set up main functions.

- **Support HDMI output to large screen display:**

Output the front camera image to the monitor for real-time preview through the HDMI interface, supporting up to 4KP30 ultra-high definition resolution.

### Technical Specifications

#### Control Keypad Parameters:

Joystick	4D precision Joystick
Knobs	3D knob, support scale rotation to adjust parameters, support button function selection mode
Buttons	High-quality silicone buttons, support white and red two-color backlight
Screen	3-inch LCD color display
Shortcut Button	Support 7 camera shortcut buttons setting
Beep Prompt Tone	Button sound prompts on/off
Lock Button	Support one-key lock function
Max. saved cameras Quantity	1000
Max. Preset Position	255
Customizable Buttons	Support three buttons to customize

#### Control:

Control Interface	RJ45 (supports POE), RS-232, RS-422/485
IP Control Protocol	Onvif, VISCA Over IP, VISCA TCP
Serial Control Protocol	VISCA, Pelco-D, Pelco-P

#### Power:

Input Voltage	12V
Input Current	0.25A
PoE	802.3af
Rated Power	3W

#### Others:

HDMI Interface	External display device
Tally	Support up to 8 channels
Operating environment	Indoor
Operating Temperature	-10°C ~ -40°C
Storage temperature	-20°C ~ -60°C
Dimensions (WxDxH)	332x136x58mm (Joystick is not included) 332x136x116mm (Joystick is included)
Weight	1.0 kg

### Ordering Information

HCS-9316CK/20 Camera Control Keypad (3" screen, HDMI output, supports PoE, adapter is included, black)

## HCS-3316ZJ Tripod



---

### Features

- Used for mounting HCS-3316HDN camera
- Max. adjustable height: 1.4 m
- Weight: 2.6 kg

---

### Ordering Information

HCS-3316ZJ.....Tripod (for HCS-3316HDN camera)

## Video Control Module



Video matrix



Camera control

### Ordering Information

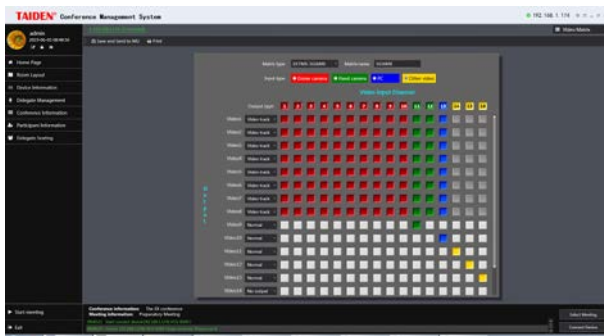
HCS-4215/50.....	Video Control Software Module (used with HCS-4100/50 series)
HCS-8215.....	Video Control Software Module (used with HCS-8300 series)

### Functions

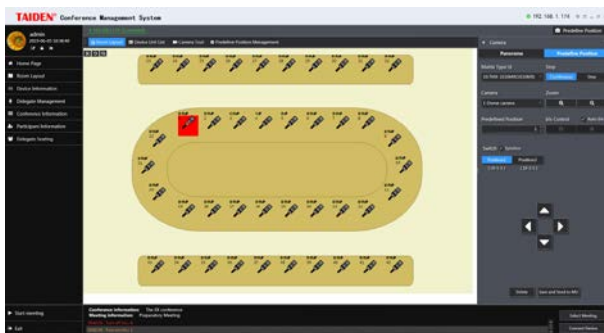
Carries out automatic video tracking when cooperating with camera and video switch unit.

- Set up video matrix: set input/output channels for computer, camera and other video apparatus according to the connections between video equipment and video switch unit. The configuration can be sent to the main unit for synchronization
- Video switch: switch among different input and output video signals according to the video matrix
- Camera control: adjust the camera preset for each seat/microphone and preset the panorama of the conference venue
- Cooperating with microphone management module to set and adjust the camera preset for each seat/microphone and to transmit speaker's video picture simultaneously to a hall display

## Video Control Software



Video matrix



Camera control

### Functions

Carries out automatic video tracking when cooperating with camera and video switch unit.

- Set up video matrix: set input/output channels for computer, camera and other video apparatus according to the connections between video equipment and video switch unit. The configuration can be sent to the Congress Main Unit for synchronization
- Video switch: switch among different input and output video signals according to the video matrix
- Camera preset: cooperating with microphone management Software to set and adjust the camera preset for each seat/microphone and to transmit speaker's video picture simultaneously to a hall display
- Camera control: preset the panorama of the conference venue

### Ordering Information

HCS-4515.....Video Control Software  
(used with HCS-4800 series)

HCS-8515.....Video Control Software  
(used with HCS-8600 series)